

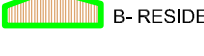





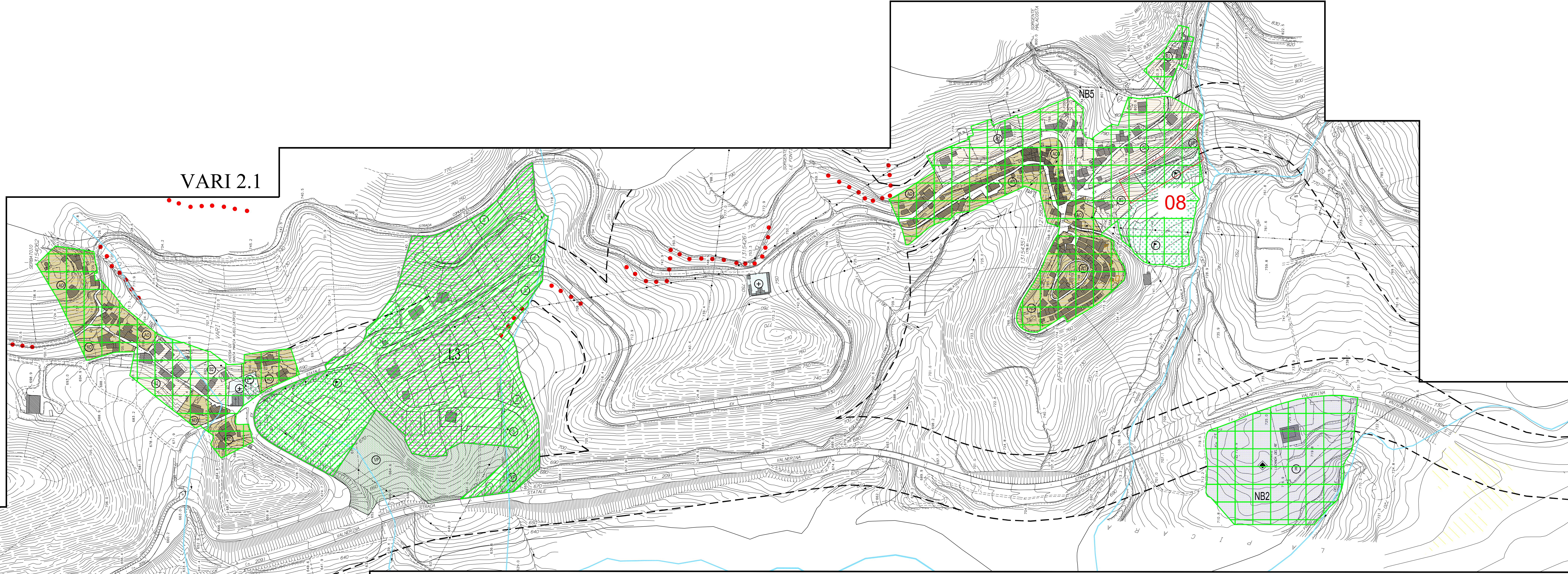
AREE DI VARIANTE

AREE ESENTI

-  aree urbanizzate esenti ai sensi dell'Art.60 punto 1a NTA PPAR ed Art.8.2.1 NTA PTC
-  aree oggetto di strumenti urbanistici attuativi esenti ai sensi dell'Art.60 punto 1a NTA PPAR ed ai sensi dell'Art.8.2.2 NTA PTC
-  B- RESIDENZIALI DI COMPLETAMENTO
-  D- PRODUTTIVE
-  F- PUBBLICHE
-  LOTTIZZAZIONI RESIDENZIALI IN ATTO

Redatto da: arch. Andrea Natalini	VARIANTE PARZIALE AL PRG LEGGE REGIONALE 29/2017	TAV
agr. Luca Paparelli	PRG VIGENTE - AREE ESENTI COLLE DI CASA VECCHIA, VARONCELLI GABBIANO, VARLAPPENNO	
Data:	Scala: 1:2000	4ES
Il Sindaco	Il Segretario	Il Responsabile UTC

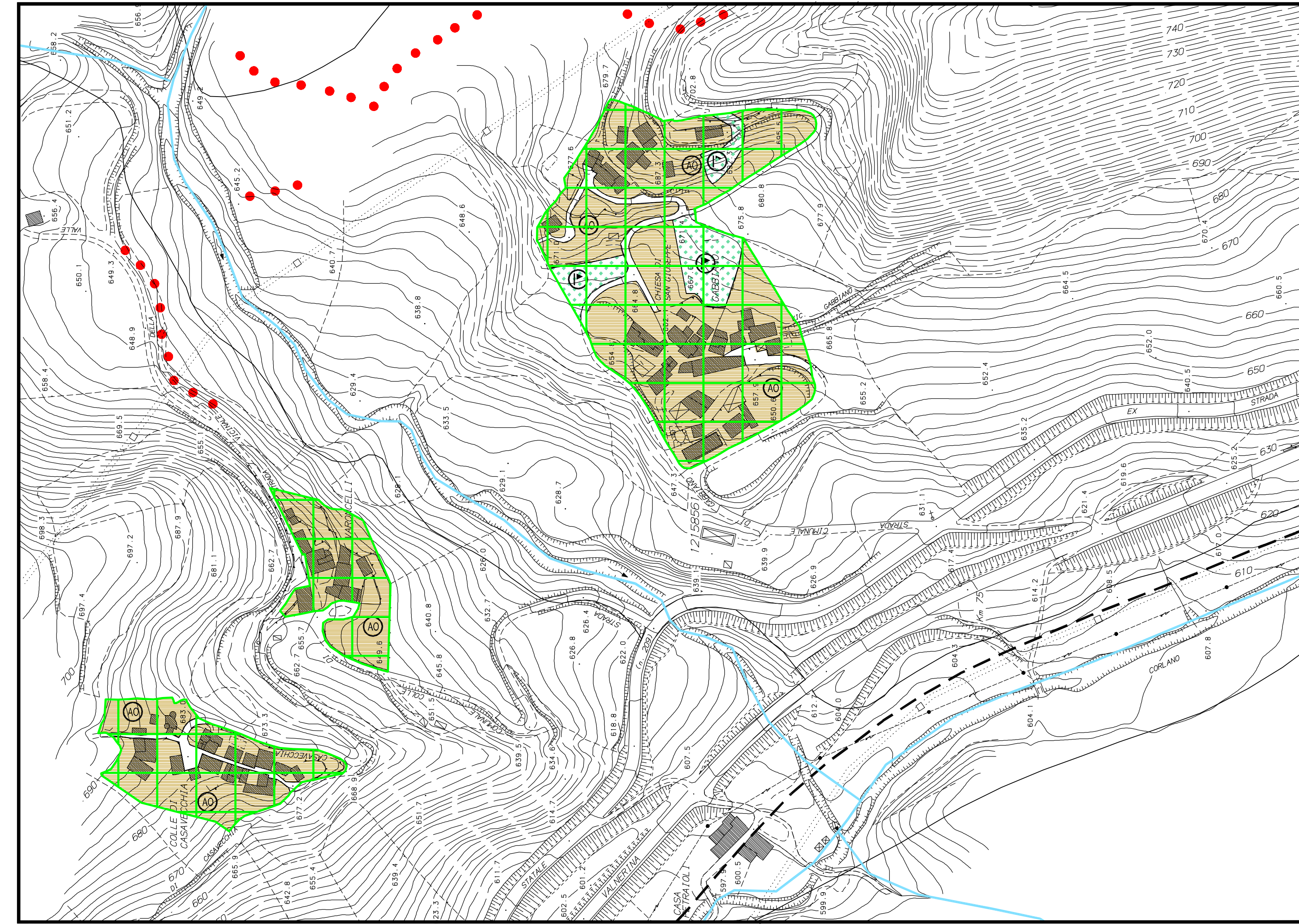
APPENNINO 2.1



VARI 2.1

VARONCELLI 2.1

GABBIANO 2.1



COLLE DI CASA VECCHIA 2.1

