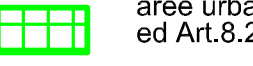
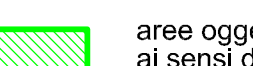



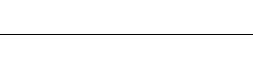


**AREE DI VARIANTE**

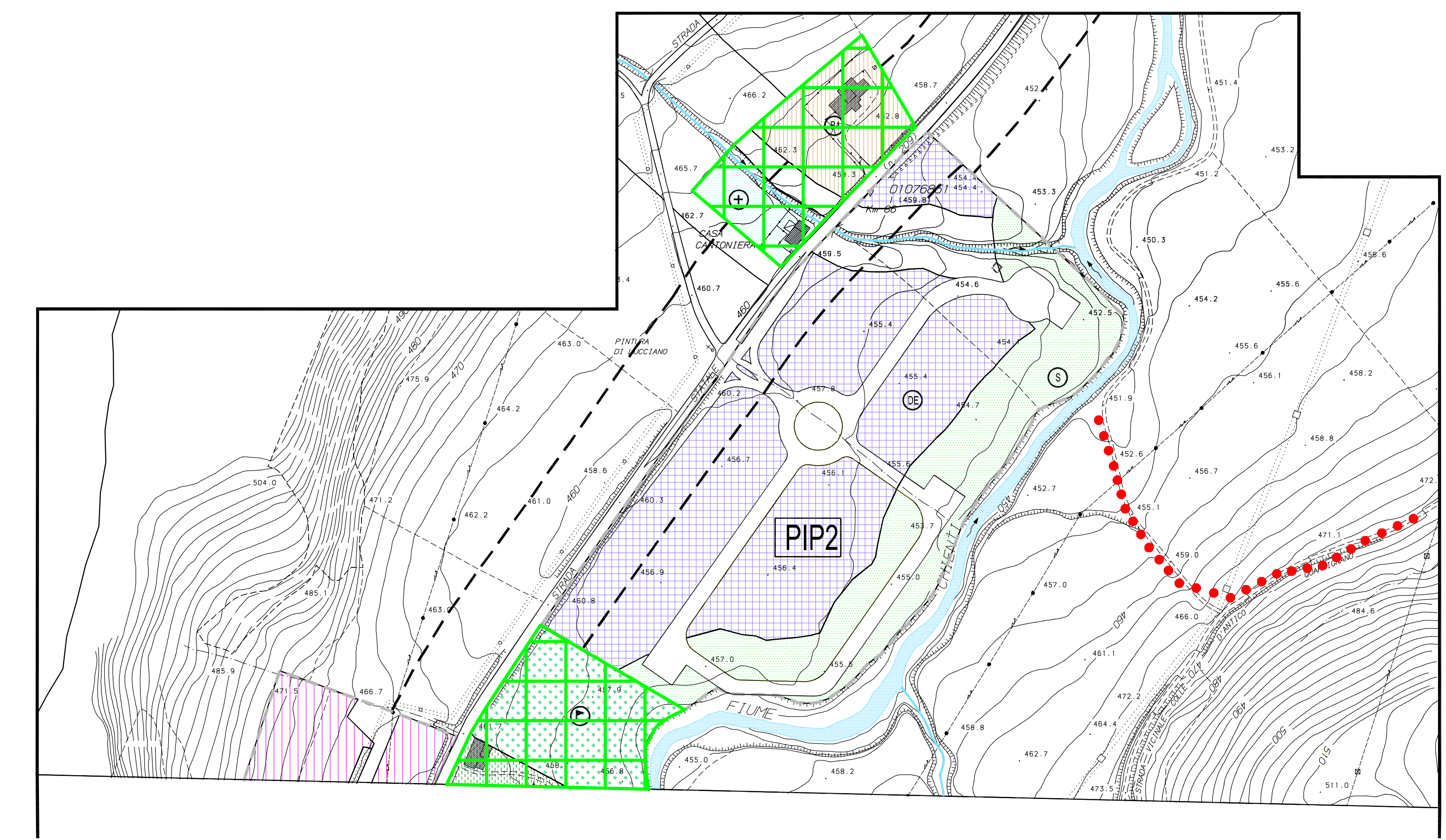
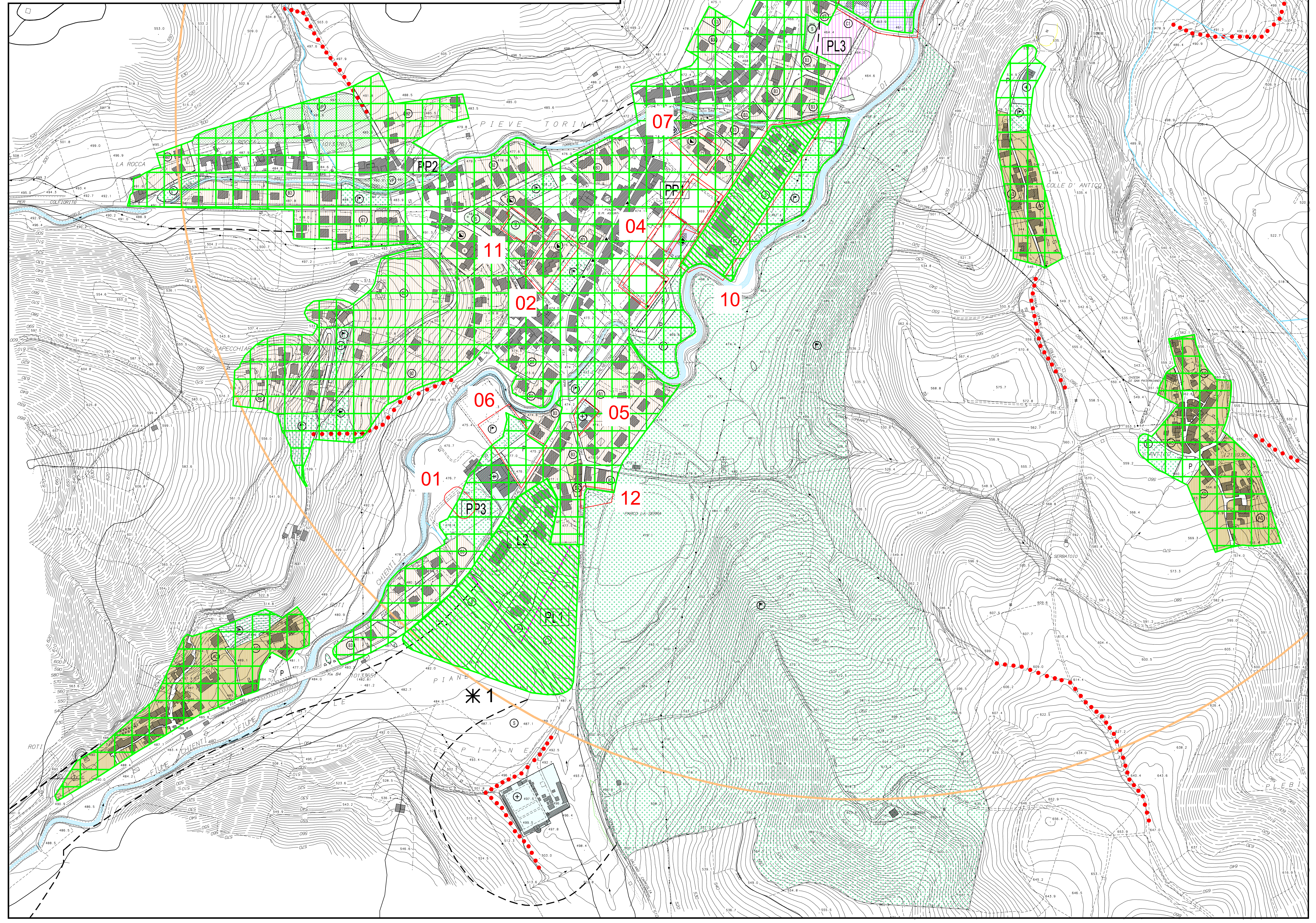
**AREE ESENTI**

-  aree urbanizzate esenti ai sensi dell'Art.60 punto 1a NTA PPAR ed Art.5.2.1 NTA PTC
-  aree oggetto di strumenti urbanistici attuativi esenti ai sensi dell'Art.60 punto 1b NTA PPAR ed al sensi dell'Art.5.2.2 NTA PTC
-  A. RESIDENZIALI DI COMPLETAMENTO
-  D. PRODUTTIVE
-  F. PUBBLICHE
-  LOTTIZZAZIONI RESIDENZIALI IN RITTO

Redatto da:	<b>VARIANTE PARZIALE AL PRG</b>	TAV
arch. Andrea Natalini	PRG VIGENTE - AREE ESENTI	
ing. Luca Paparelli	1.1 PIEVE TORINA, LA ROCCA, ROTI, COLLE D'ANTICO, ANTICO	
	1.2 PIECOLLINA	
Data:	Scala: 1:2'000	<b>3ES</b>
Il Sindaco:	Il Segretario:	Il Responsabile LUT:

LA ROCCA 1.1

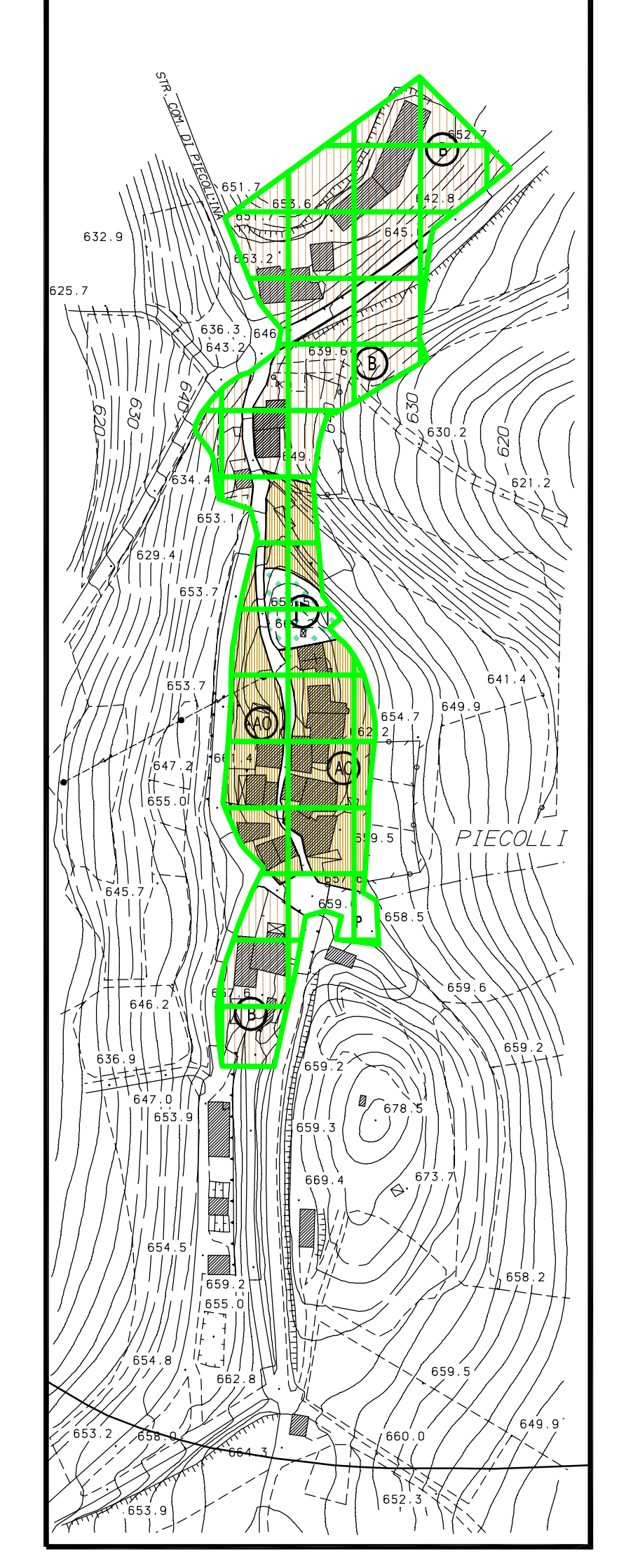
PIEVETORINA 1.1



COLLE D'ANTICO 1.1

ANTICO 1.1

PIECOLLINA 1.2



ROTI 1.1

