

**REGIONE MARCHE**

**COMMISSARIO STRAORDINARIO RICOSTRUZIONE SISMA - 2016**  
 Microzonazione Sismica di Livello 3 del Comune di Pieve Torina ai sensi dell'Ordinanza del Commissario Straordinario n. 24 registrata il 15 maggio 2017 al n. 1065

**MICROZONAZIONE SISMICA**  
 Carta delle indagini  
 scala 1:5.000

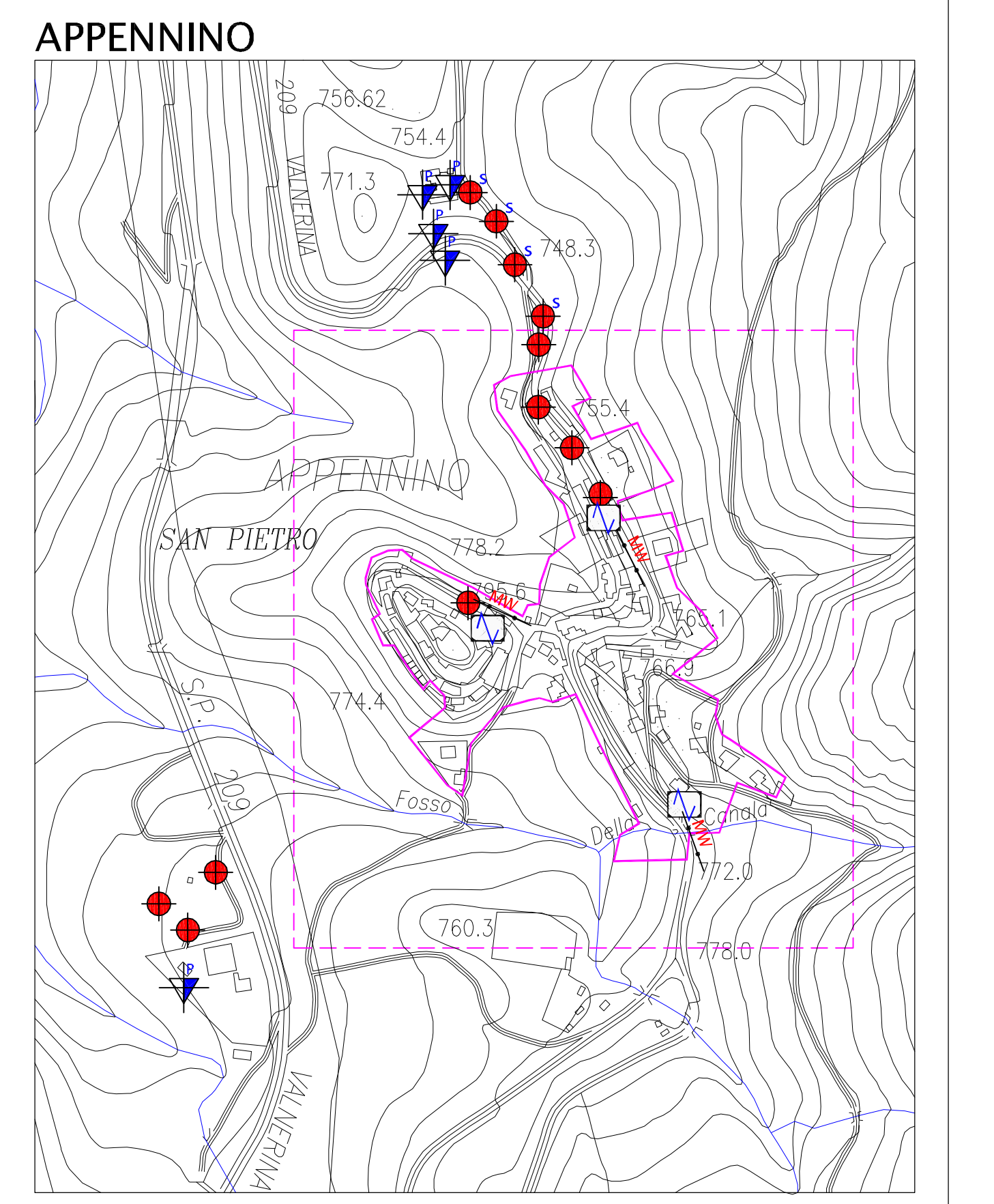
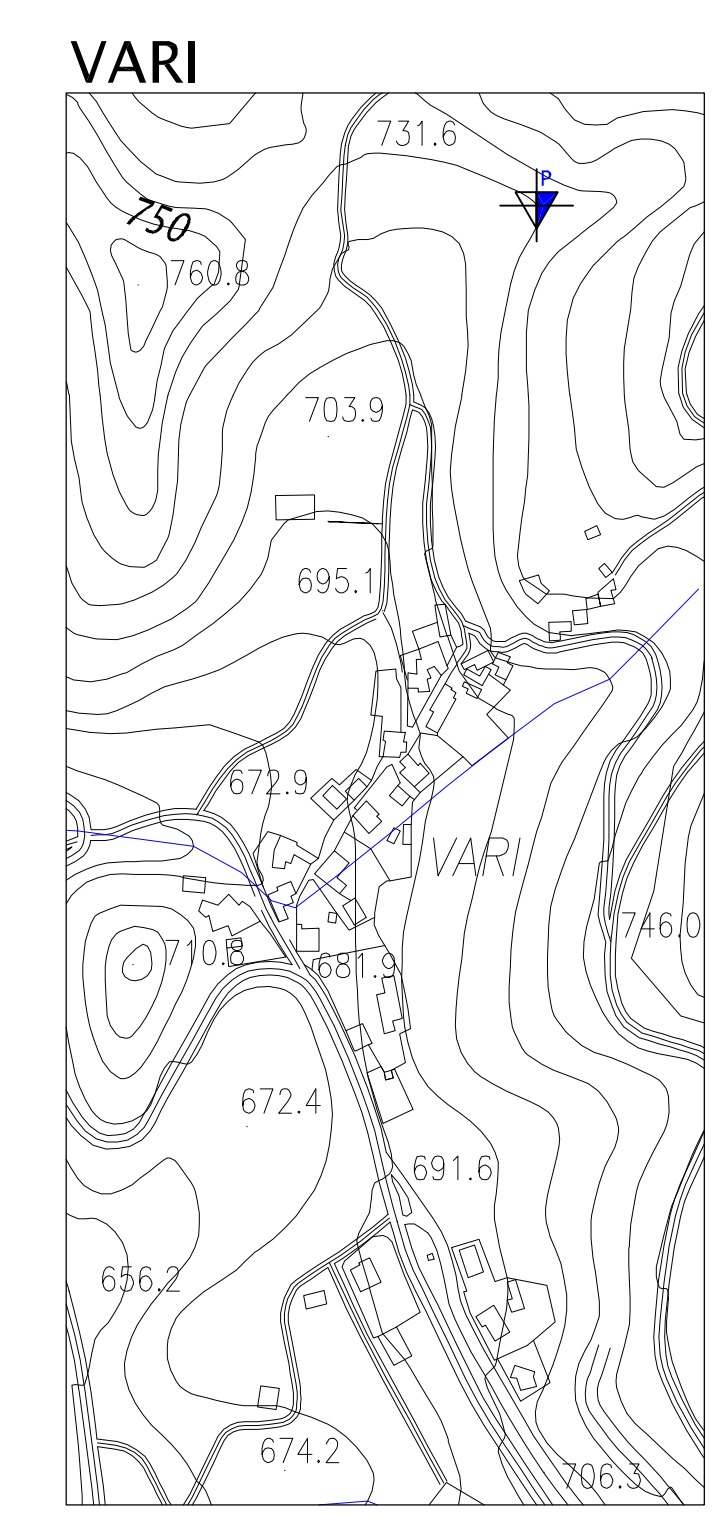
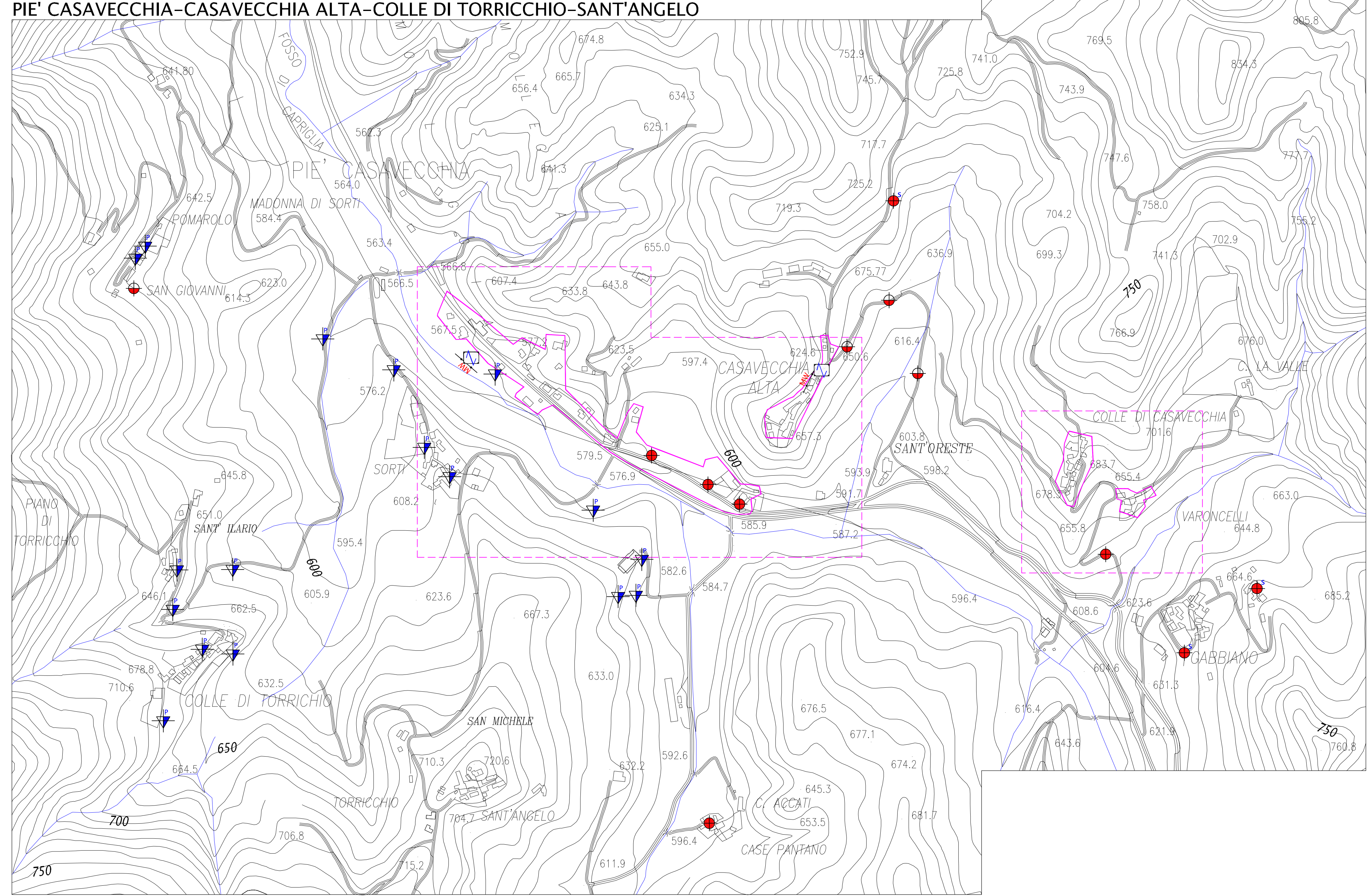
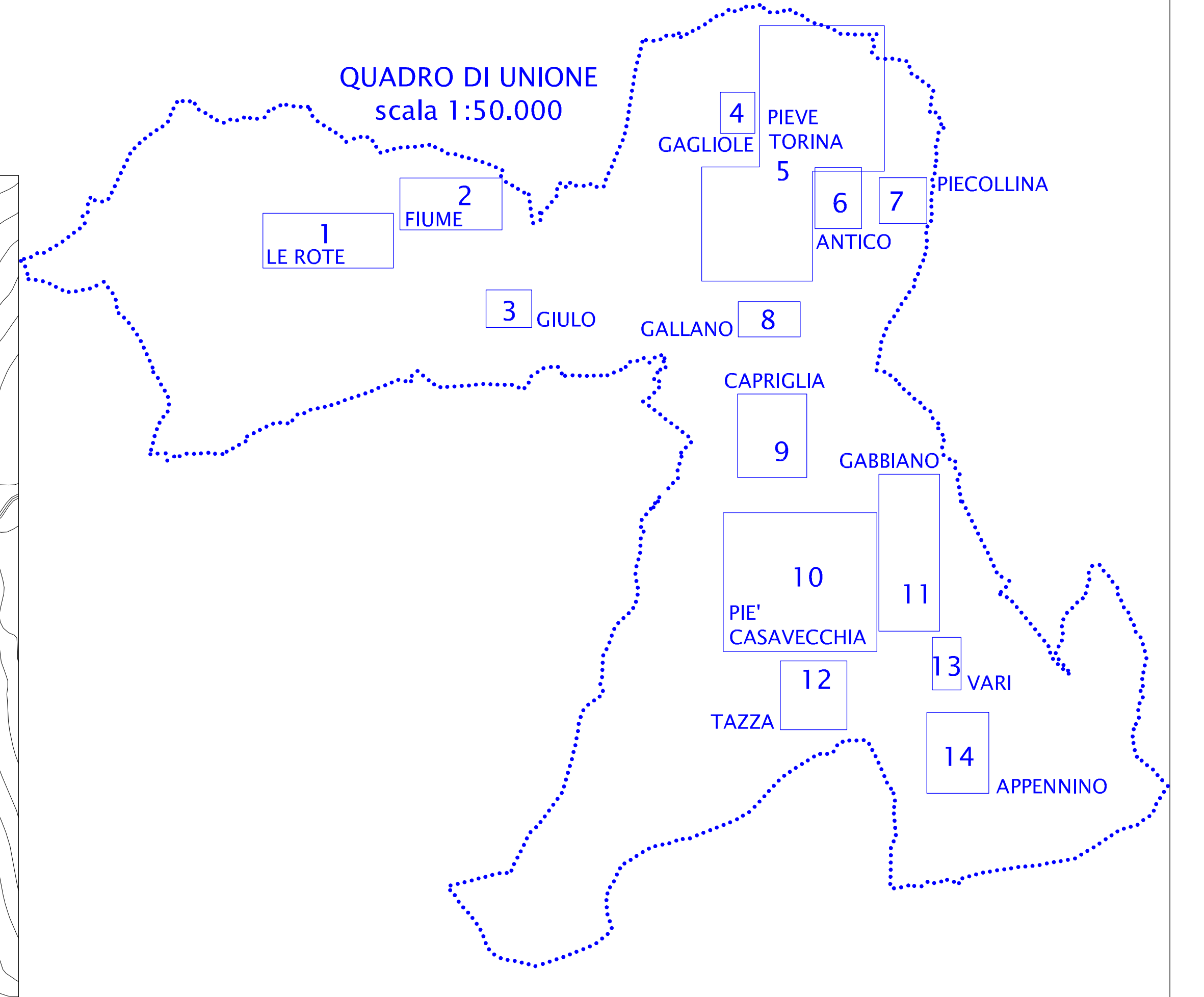
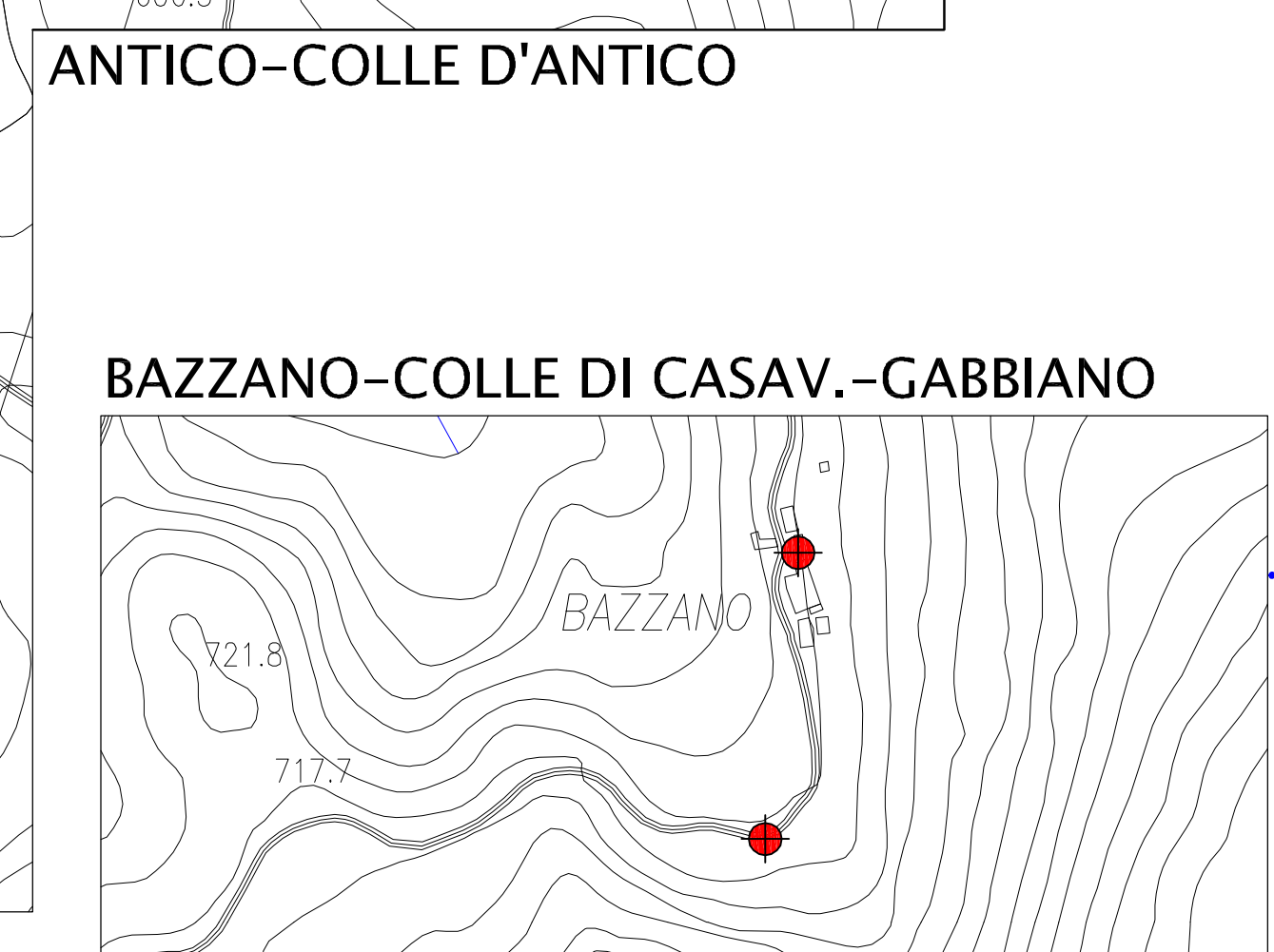
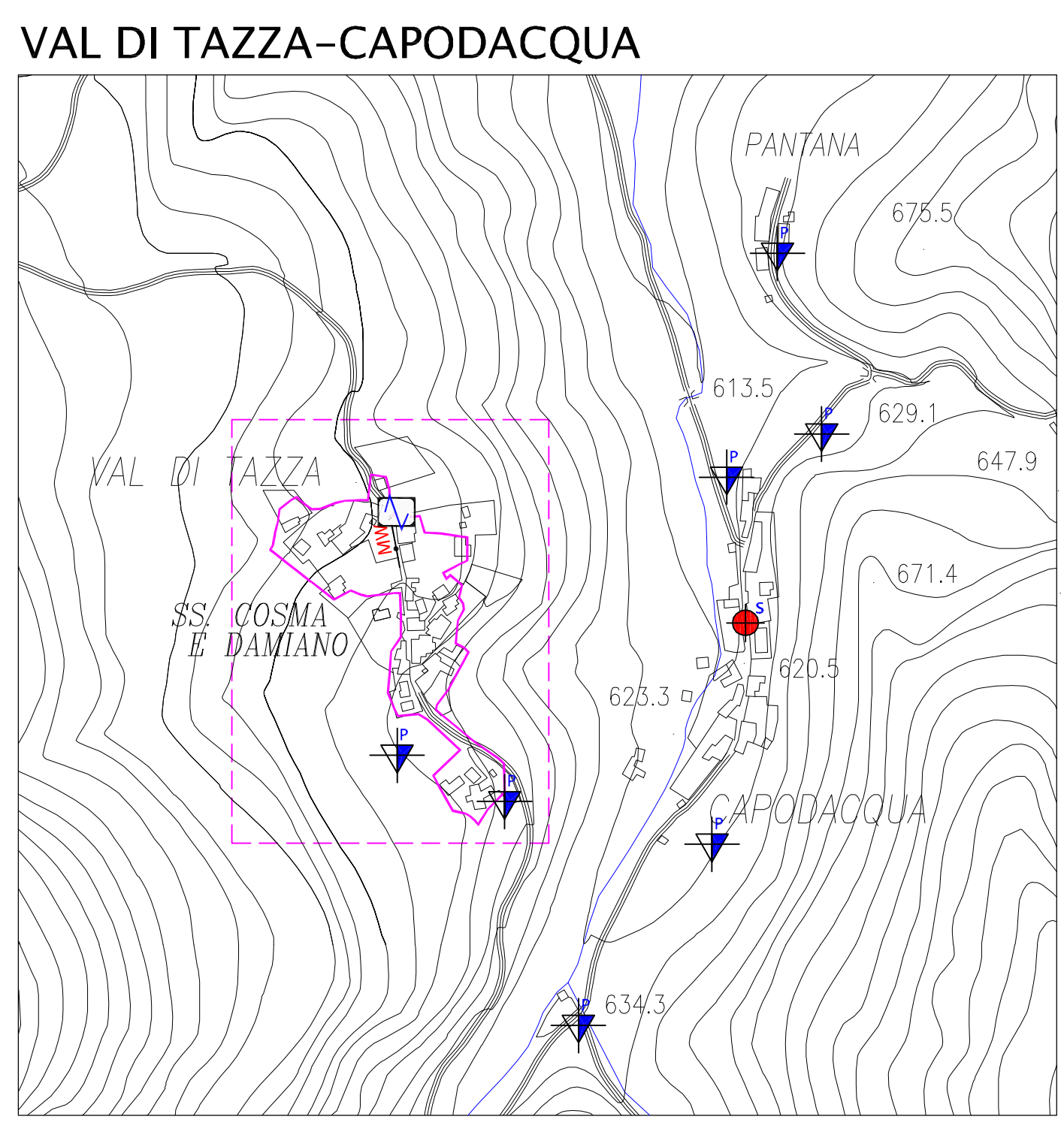
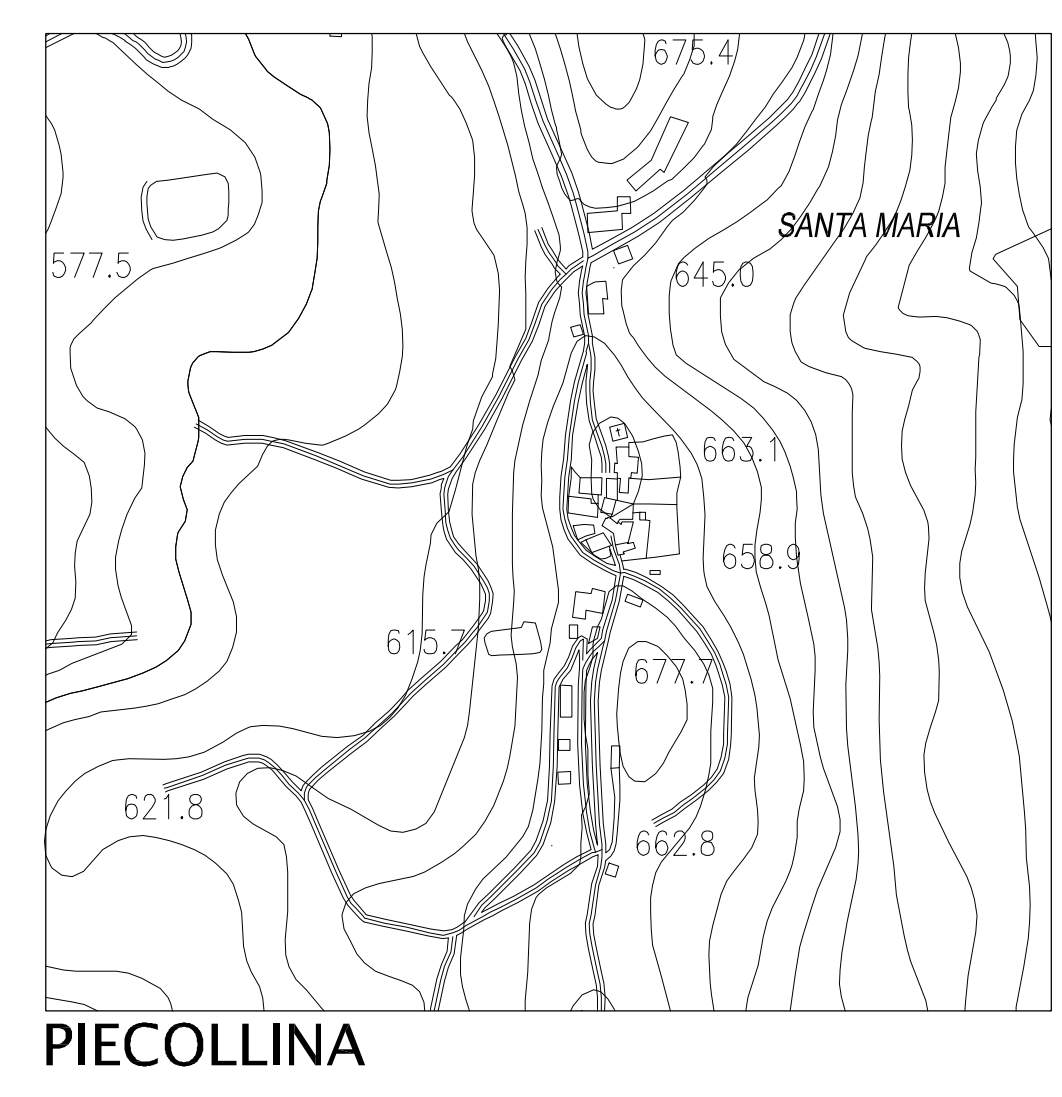
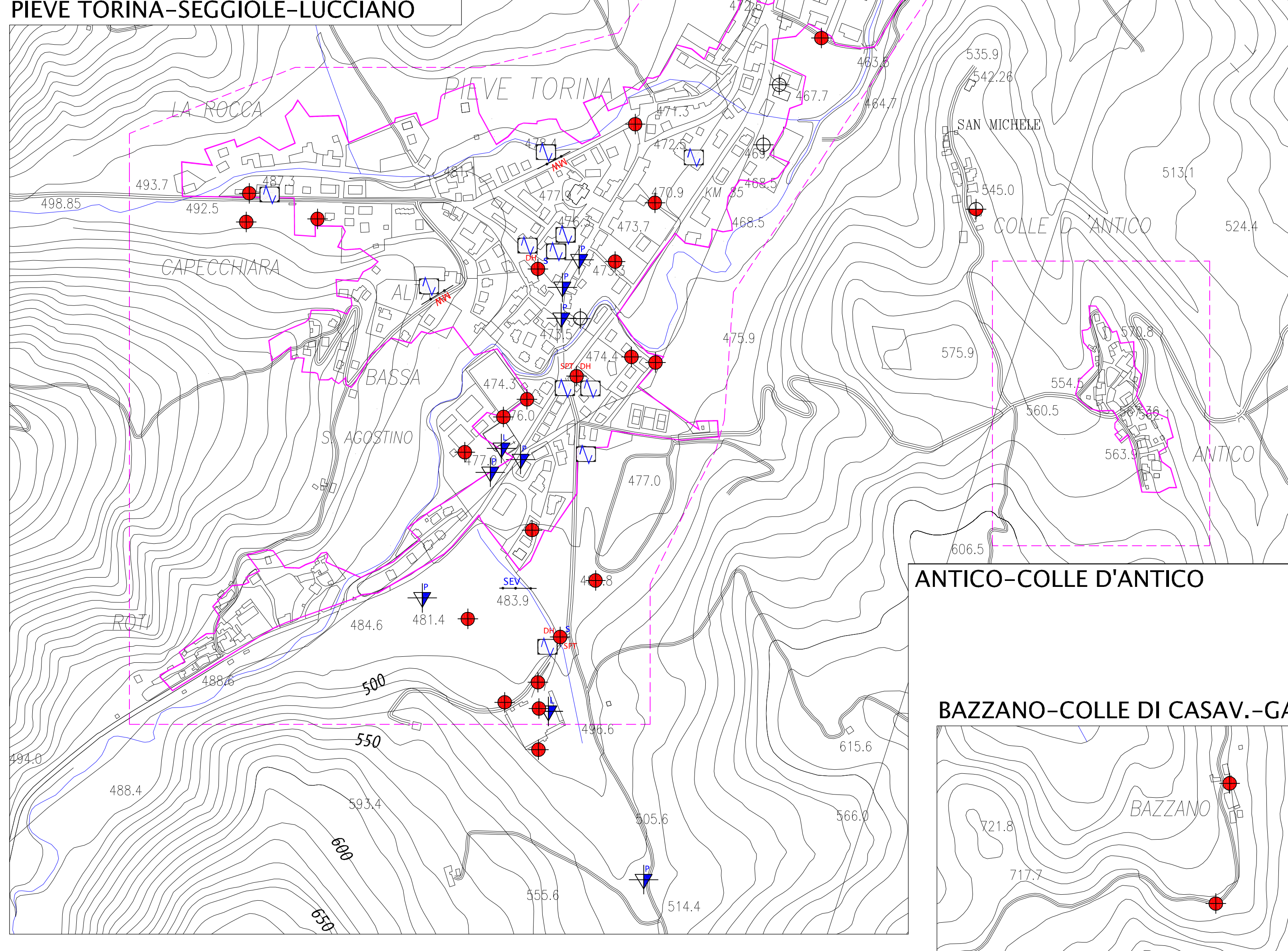
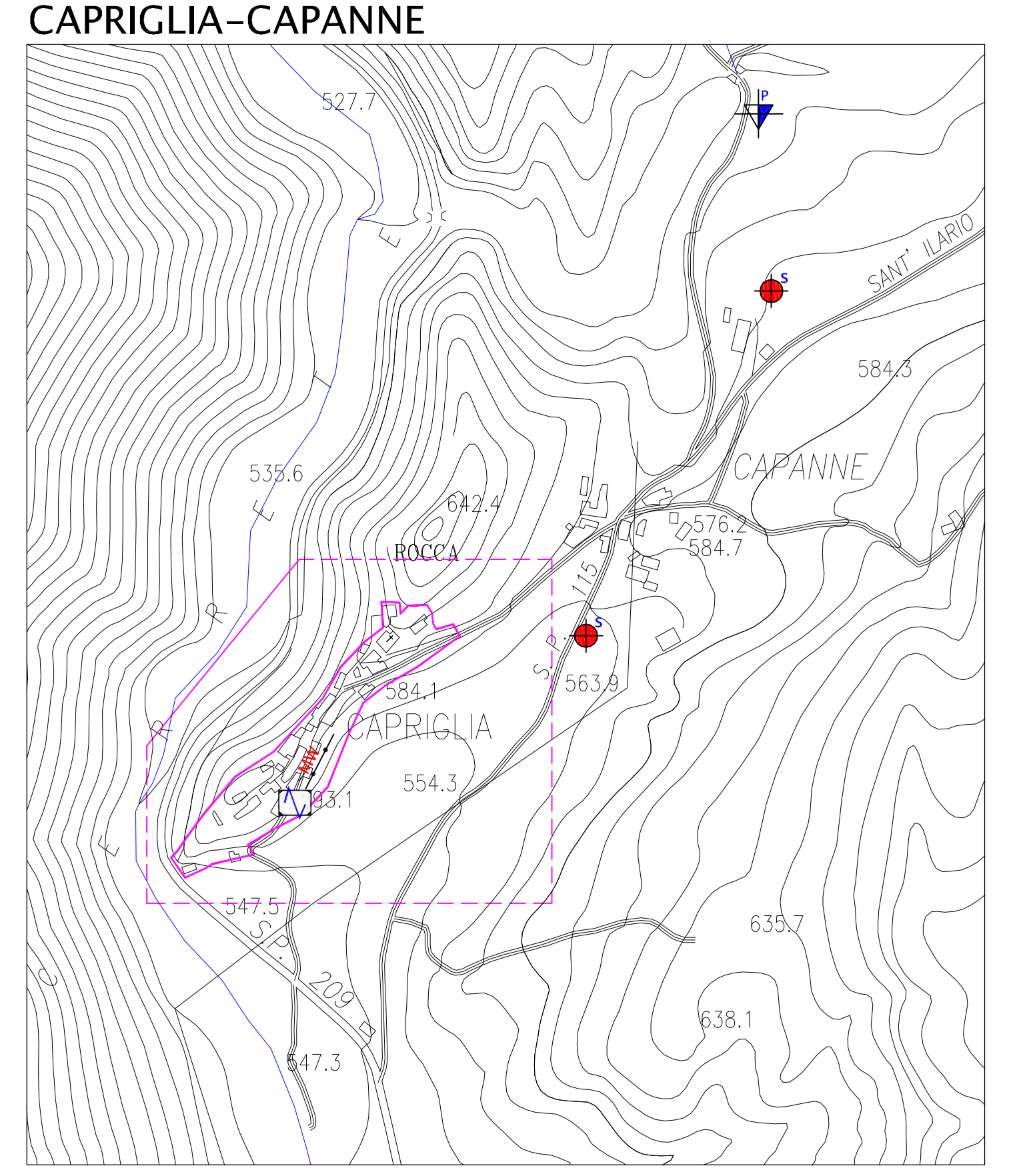
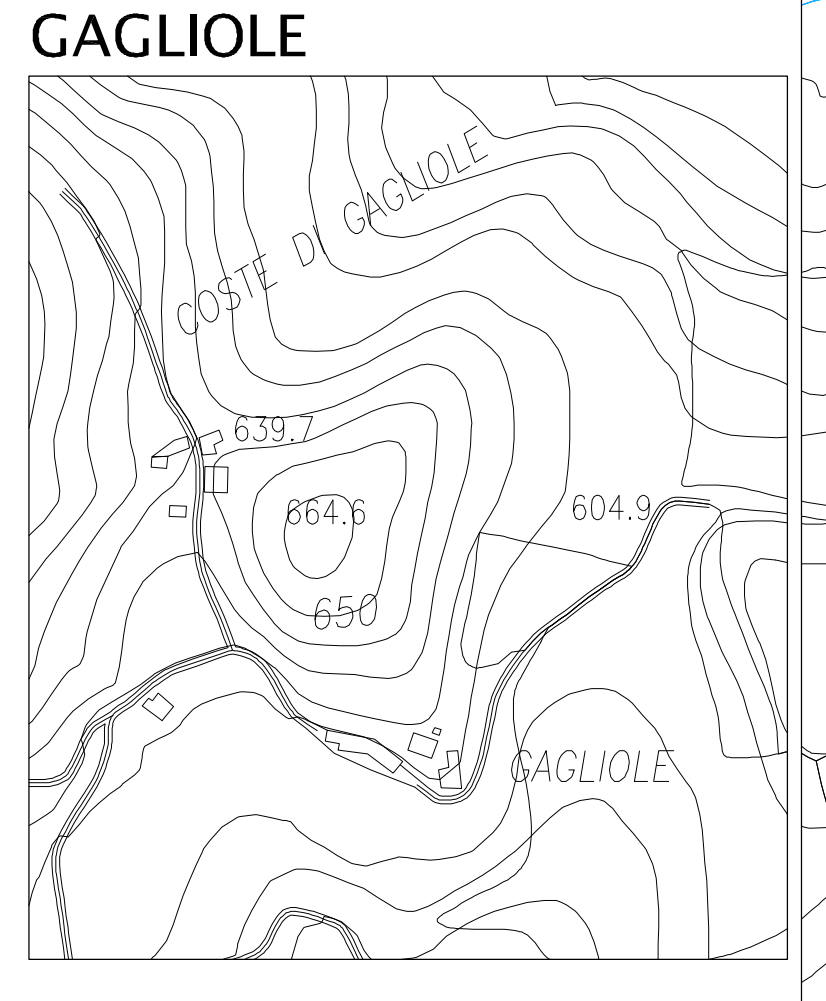
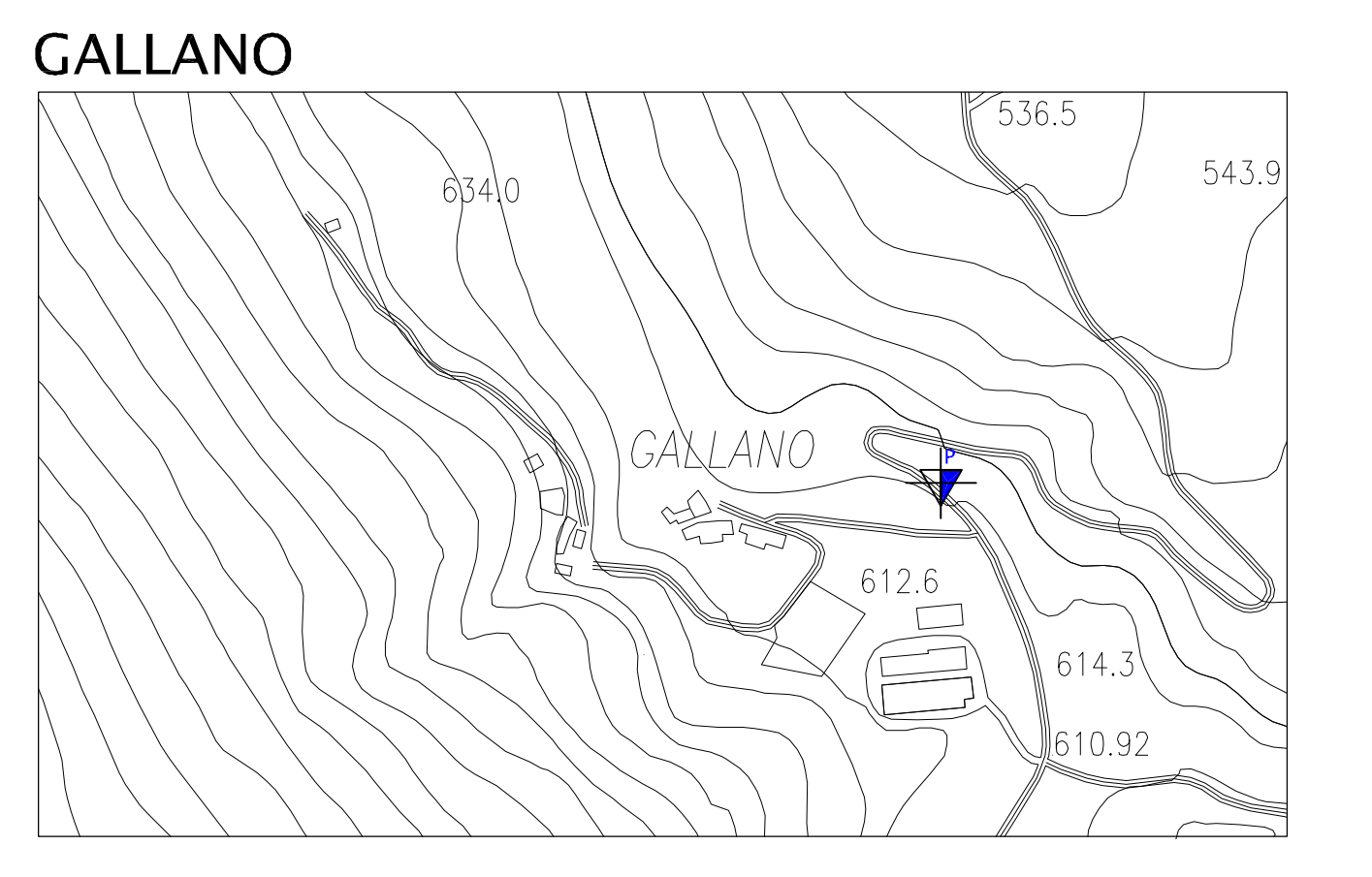
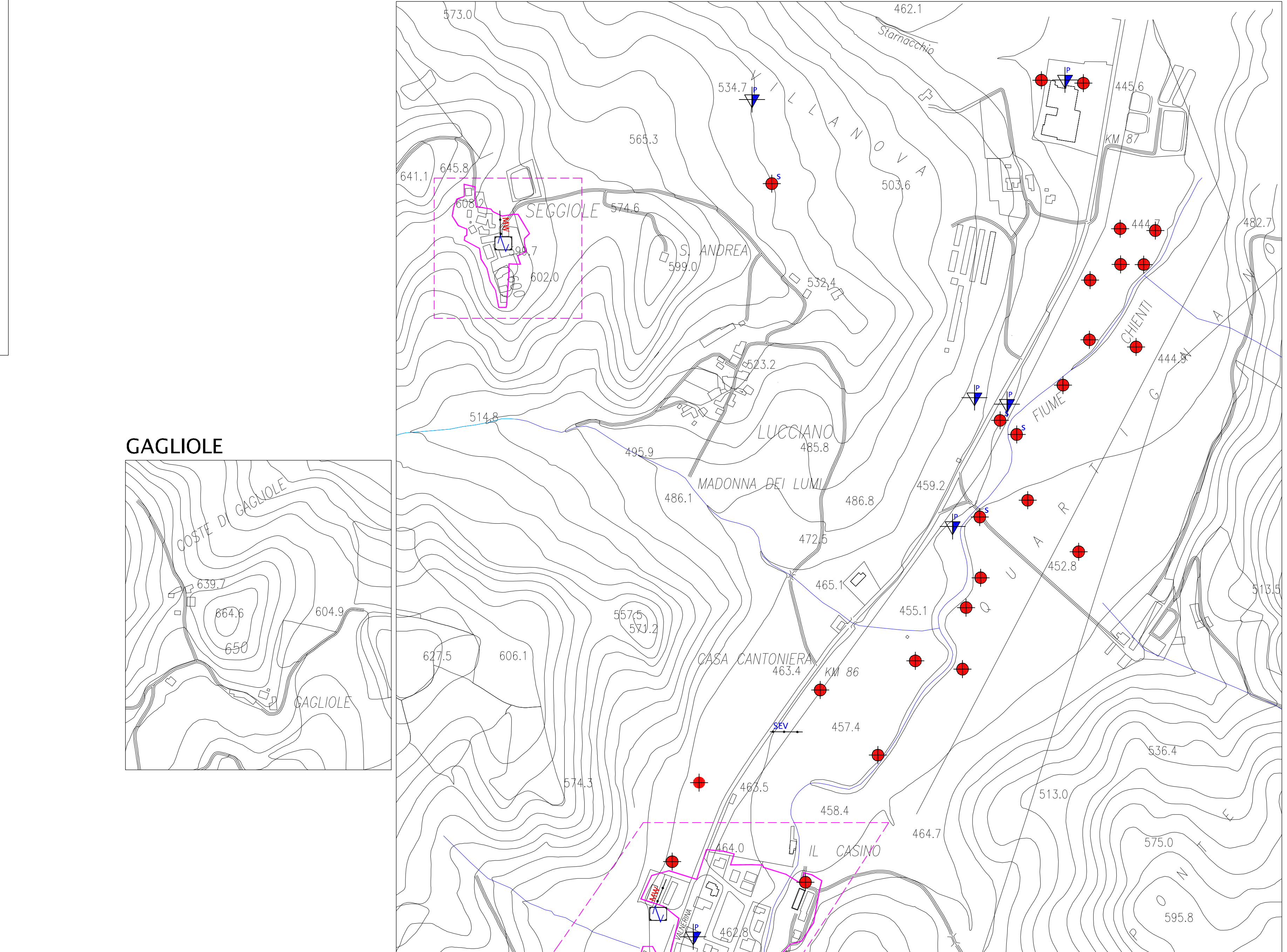
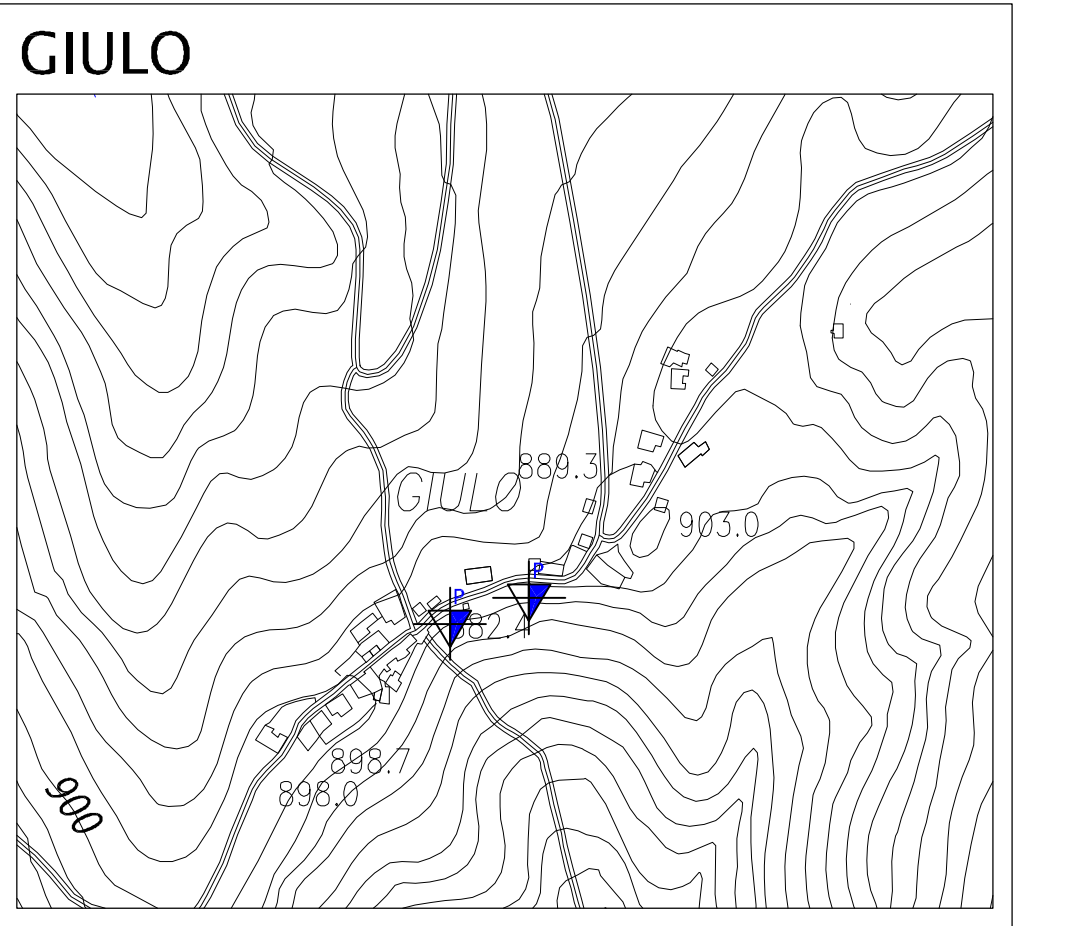
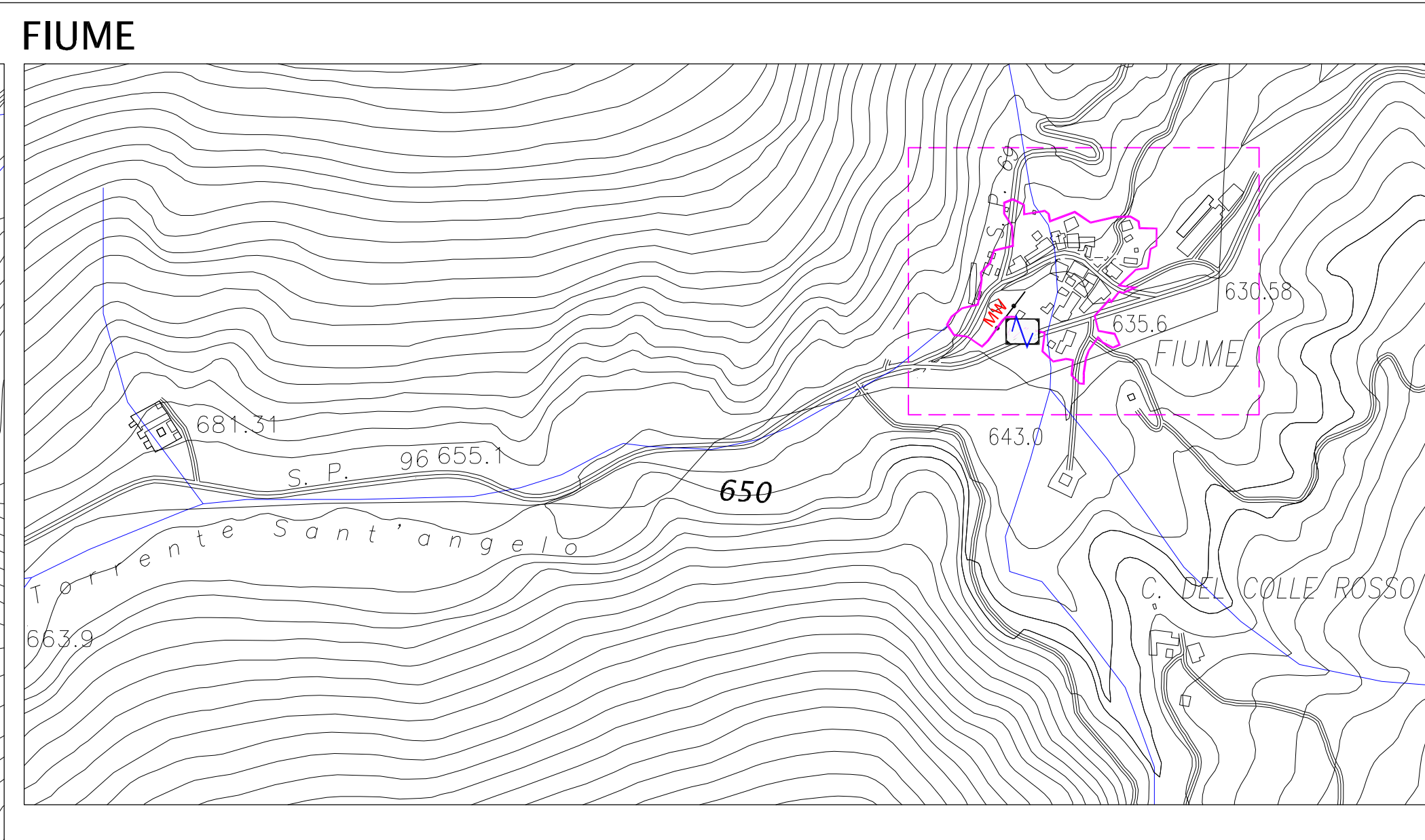
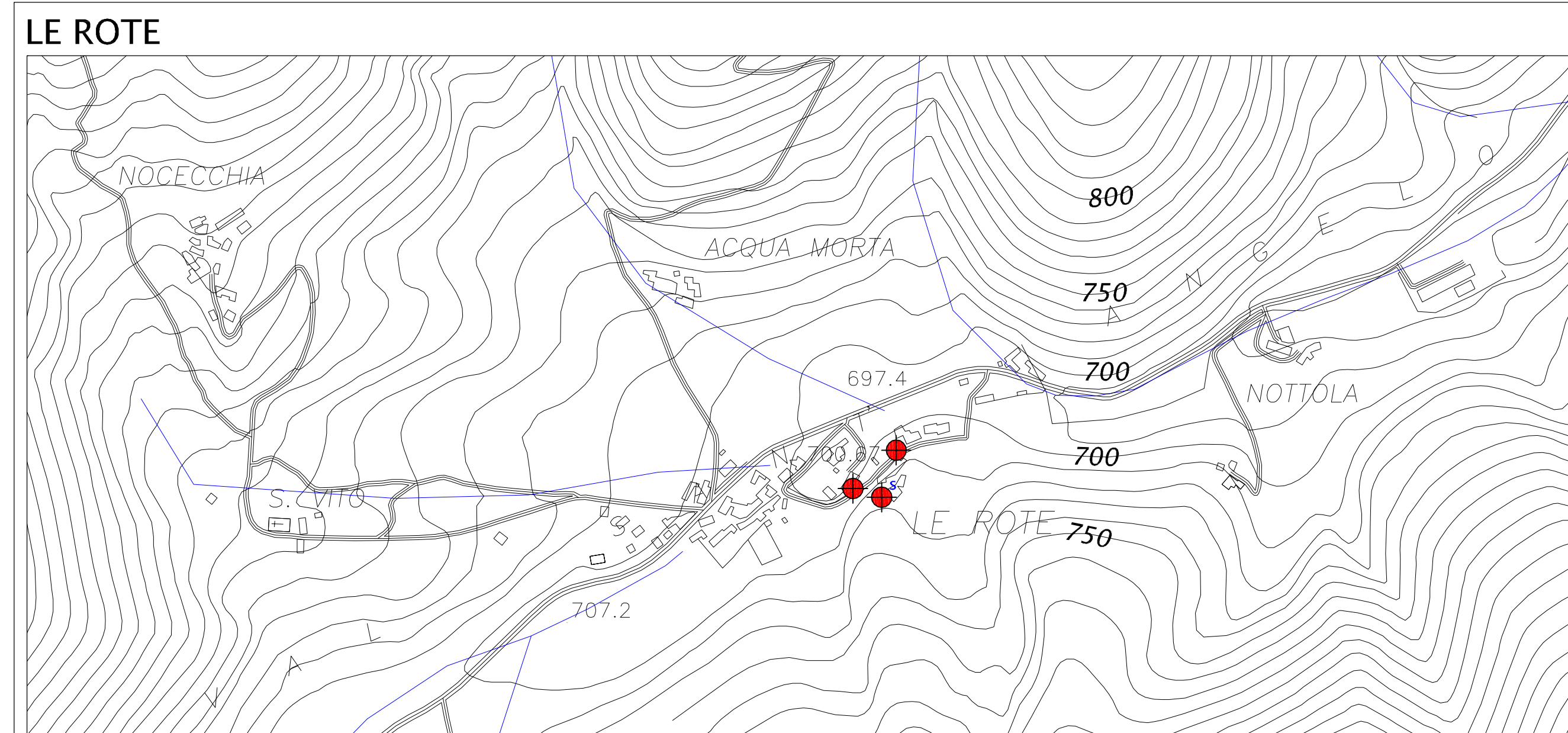
Regione Marche  
 Comune di Pieve Torina



Progetto Realizzatore: **CENTROMS**  
 CENTRO PER LA MICROZONAZIONE SISMICA E LE SUE APPLICAZIONI

888 prof. URBANISANO  
 888 prof. NERESIO GAZZALI  
 888 prof. GIOVANNI PIERI

14/05/2018\_2018



- LEGENDA**
- Sondaggio a carotaggio continuo
  - Sondaggio a carotaggio continuo che intercetta il substrato
  - Prova sismica in foro tipo Downhole
  - Prova penetrometria in foro (SPT)
  - Trincea o pozzetto esplorativo
  - Sondaggio a distruzione di nucleo
  - Prova penetrometrica dinamica pesante
  - Prova penetrometrica dinamica leggera
  - MASW
  - Sondaggio elettrico verticale
  - Stazione microtremore a stazione singola
  - Limite aree MS II' livello